

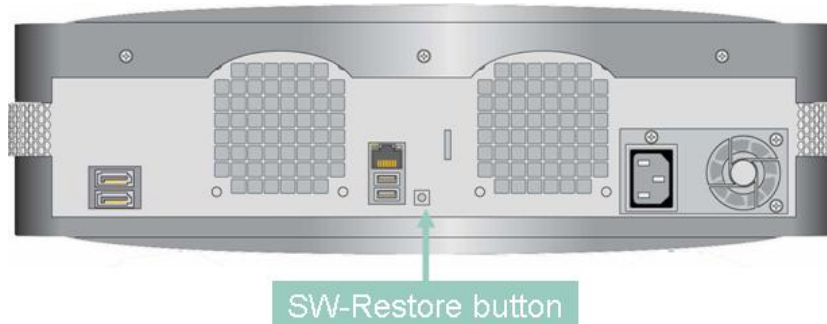
FSC SCALEO Home Server

Recovery of the Server-Software

The customer receives the DVD “**SCALEO Home Server – Server Recovery**” for recovery of the Home Server software. This DVD can be used on a client PC to recover the server. For that the client has to be connected with the server via LAN or directly.

First it is necessary to prepare the Home Server device.

A. Start Recovery-Mode of the SCALEO Home Server



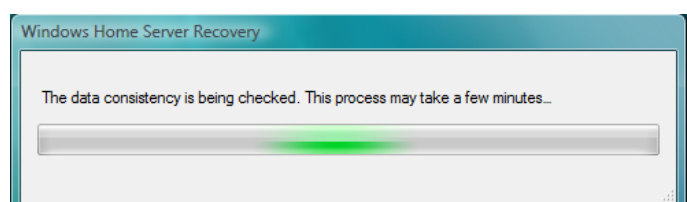
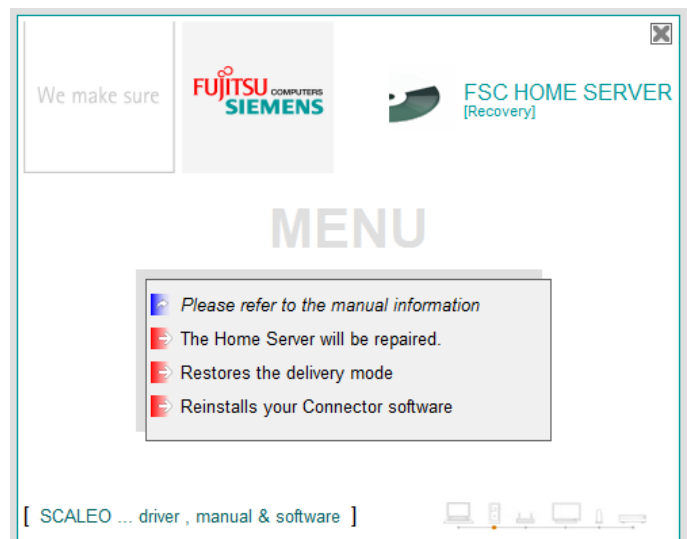
- Press the **SW-Restore-button** on the rear site of the Home Server while switching on the power button - Hold it for approximately 10 seconds.
- The Server recovery environment starts from the DOM (disk on module) and sends after a few minutes broadcast messages to connected clients.

B. Actions on a client computer

- It is necessary to uninstall the Client Connector software before starting the Home Server recovery process!
- Insert Server Recovery DVD and use the autorun function to start
- A menu with four entries appears
 1. **“Please refer to the manual information”**
Opens the Home Server manual
 2. **“The Home Server will be repaired”**
Repair mode of the Home Server software.
User data will not be lost
 3. **“Restore of the delivery mode”**
Recovery of the Home Server software to the factory defaults
All user data will be deleted
 4. **“Reinstall of the Connector software”**
Installs the Connector software to this client anew
- With running of Point 2. or 3. the program starts to restore the Home Server Image (repair mode / install mode)
- For both modes the image is temporarily stored on the hard disk drive of the client computer (volume C:)

Advantages:

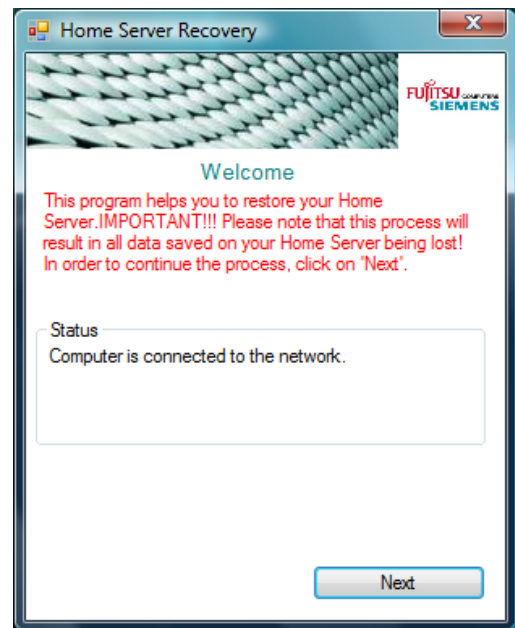
Checking the data consistence
reduces recovery problems



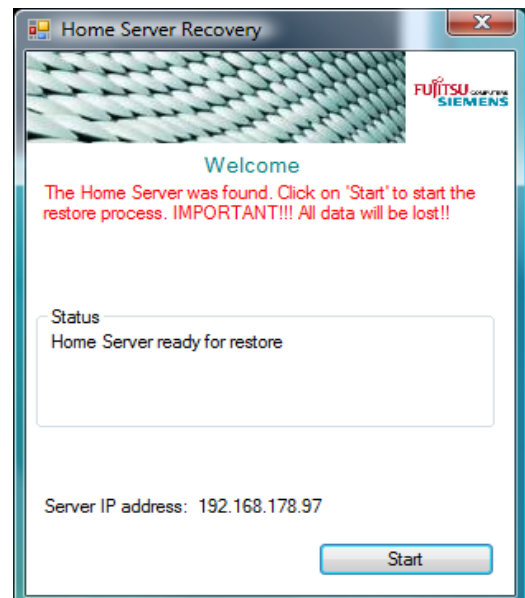
FSC SCALEO Home Server

Recovery of the Server-Software

- After copying the image the Home Server Recovery starts



- Press **Next** to search the Home Server.
- The recovery software tries to find a connected Home Server in Recovery-Mode to restore.



- If the Home Server was found the IP-address will be shown.
- Click **Start** to start the recovery.

...

- After approximately 15 min the recovery process is finished.
- The Home Server reboots automatically.
- After a few minutes the Client Connector software can be installed anew.

